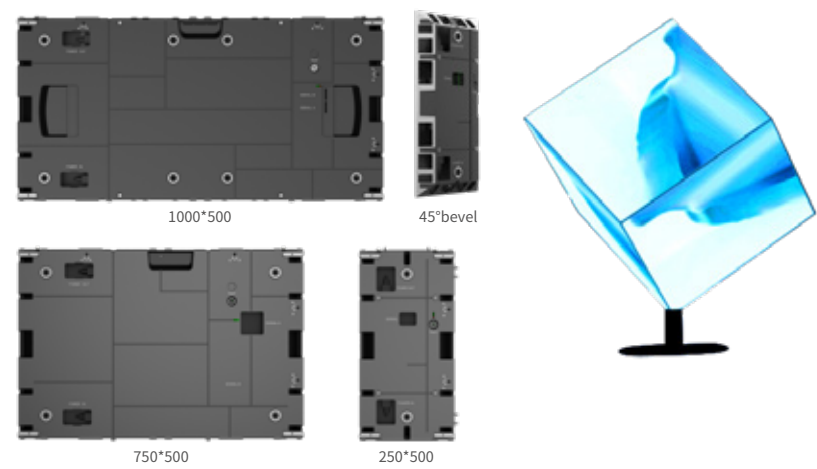


“X”tremely Creative -- 45° Bevels

Special 45° bevel-cut panels in various sizes enable flexible installs like L-shapes, pillars, and hexahedrons.



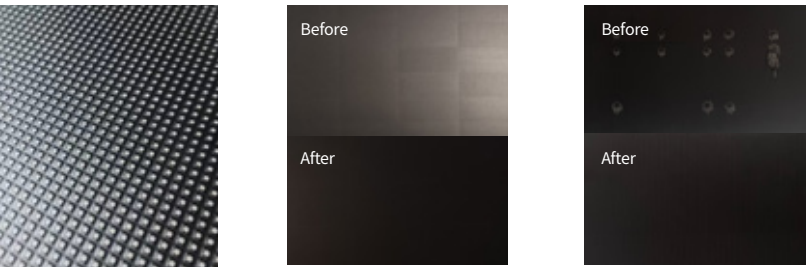
“X”tremely Ingenious -- Mixed Splicing at Will

BSL-VIM Plus-X works with VIM MIN & VIM Plus, sharing modules for creative shapes like the award-winning “THE WOW” 3D display.



“X”tremely Tech-Powered -- Value-Added Techs

Multiple patented technologies provide extra benefits to help you stand out in the market.



**HOB Craftsmanship**  
High-temperature solidification on board for protection improvement

**Black Nano Armor Tech**  
To enhance the color consistency and offer a protective coating

**“M Dust-shield”Technology**  
To solve the small dark spot issue caused by metal dust.

|                                 |                                                                               |               |               |               |               |               |
|---------------------------------|-------------------------------------------------------------------------------|---------------|---------------|---------------|---------------|---------------|
| Model                           | VIM Plus-X1.5                                                                 | VIM Plus-X1.9 | VIM Plus-X2.6 | VIM Plus-X3.1 | VIM Plus-X3.9 | VIM Plus-X5.2 |
| Pixel Pitch (mm)                | 1.5                                                                           | 1.9           | 2.6           | 3.1           | 3.9           | 5.2           |
| Pixel Density (pixel/㎡)         | 409600                                                                        | 262144        | 147456        | 102400        | 65536         | 36864         |
| LED Type                        | SMD (HOB Available)                                                           |               | SMD           |               |               |               |
| Panel Size W×H×D (mm)           | 1000*500*42 / 750*500*42 / 250*500*42                                         |               |               |               |               |               |
| Panel Resolution W×H            | 640*320                                                                       | 512*256       | 384*192       | 320*160       | 256*128       | 192*96        |
|                                 | 480*320                                                                       | 384*256       | 288*192       | 240*160       | 192*128       | 144*96        |
|                                 | 160*320                                                                       | 128*256       | 96*192        | 80*160        | 64*128        | 48*96         |
| Panel Material                  | Die-cast Aluminum                                                             |               |               |               |               |               |
| Weight (Kg/pc)                  | 11/8/3.5                                                                      |               |               |               |               |               |
| Voltage                         | AC110~220V                                                                    |               |               |               |               |               |
| Brightness (nits)               | 600                                                                           | 800           | 3000          |               |               |               |
| Brightness Adjustment           | Programmable/Automatic/Manual                                                 |               |               |               |               |               |
| Viewing Angle (H/V)             | 160°/120°                                                                     |               |               |               |               |               |
| Gray Scale (bit)                | 14~16                                                                         |               |               |               |               |               |
| Refresh Rate (Hz)               | 3840                                                                          | 3840          | 3840          | 1920/3840     | 1920/3840     | 1920/3840     |
| Frame Rate (Hz)                 | 50/60                                                                         |               |               |               |               |               |
| Contrast Ratio                  | 8000:1                                                                        |               |               |               |               |               |
| Color Temperature (K)           | 2000-10000 (Adjustable)                                                       |               |               |               |               |               |
| Average Power Consumption (W/㎡) | 138                                                                           | 120           | 120           | 145           | 145           | 145           |
| Maximum Power Consumption (W/㎡) | 550                                                                           | 475           | 475           | 580           | 580           | 580           |
| Serviceability                  | Front                                                                         |               |               |               |               |               |
| IP Rating                       | IP30                                                                          |               |               |               |               |               |
| Lifespan (Hours)                | 100000                                                                        |               |               |               |               |               |
| Certifications                  | CB, ETL, FCC, LVD, EMC, RoHs, BIS, EN13501-1 Fire Resistance,Carbon Footprint |               |               |               |               |               |

\*Above parameters are for reference only. For more details, please contact our sales team. All rights reserved.

Email: USA [info@bigshineled.com](mailto:info@bigshineled.com) | DR [informacion@bigshinelasamericas.com.do](mailto:informacion@bigshinelasamericas.com.do)  
Phone: USA (845) 219-5548 | DR (809) 373-6635  
Websites: [bigshineled.com](http://bigshineled.com) | [bigshinelasamericas.com.do](http://bigshinelasamericas.com.do)



BSL-VIM-Plus-L Series

Award-Winning X-Generation Indoor LED Display



red dot winner 2023



Stable  
Operation



Multiple  
Sizes



90°  
Rotation



Creative  
Splicing



High  
Brightness



Award  
Winner



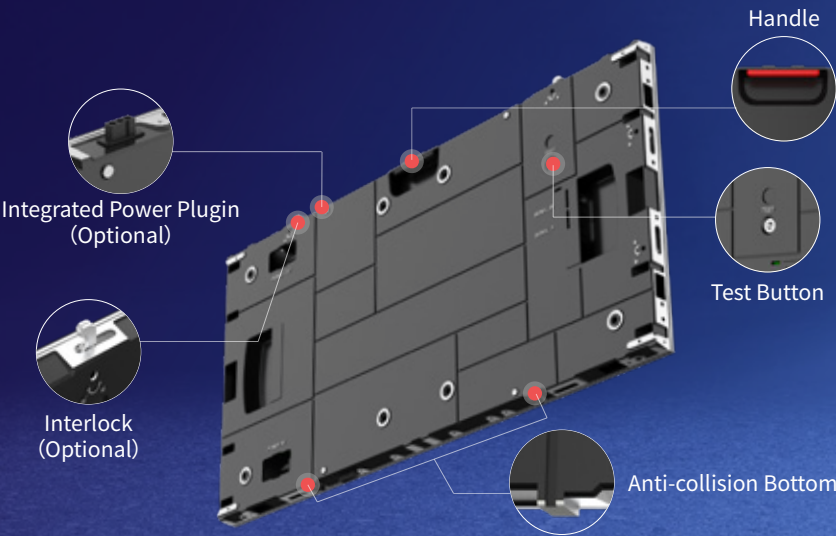


# BSL VIM Plus-L Series

Award-Winning X-Generation Indoor LED Display

## “X”tremely Considerate -- Detail Matters

The one-piece die-cast panel features ergonomic details to enhance user experience.



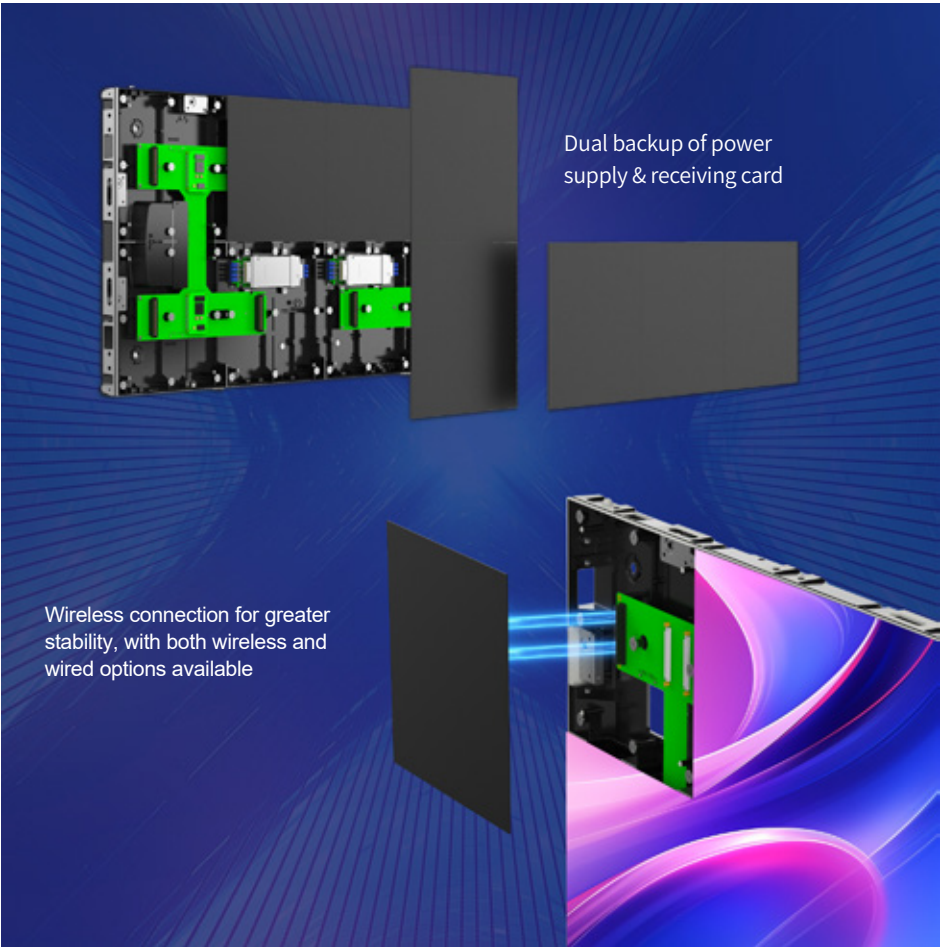
42mm  
Ultra thin

22kg/m<sup>2</sup>  
Ultra light

≤0.1mm  
Splicing Accuracy

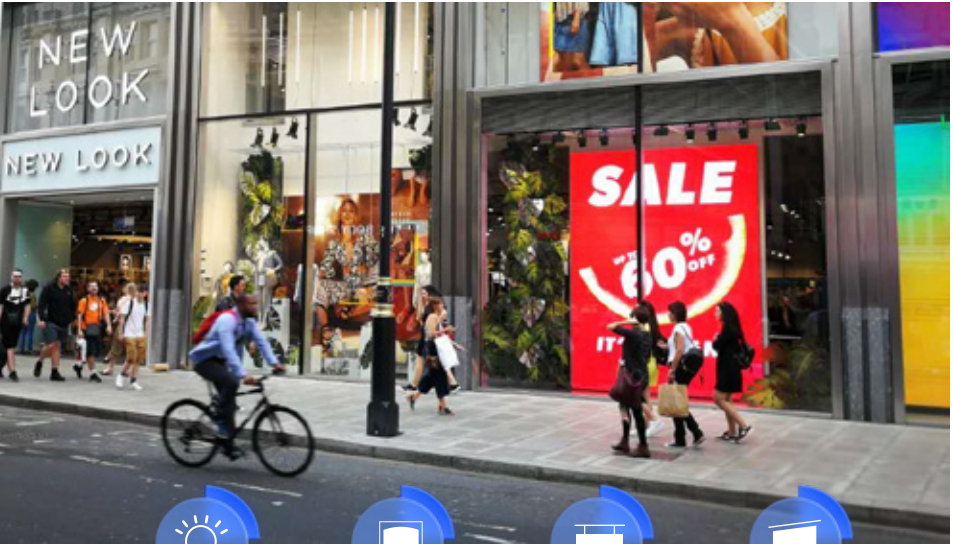
## “X”tremely Stable -- Wireless Connection, Dual Backup

Wireless module connectivity ensures stable long-term use, with optional dual backup for the receiving card and power supply to prevent disruptions.



## “X”tremely Versatile -- Multi-Scenario Application

VIM Plus-L supports wall mounting, stacking, and hanging, with high-brightness models for semi-indoor spaces like shop windows and storefronts.



High Brightness

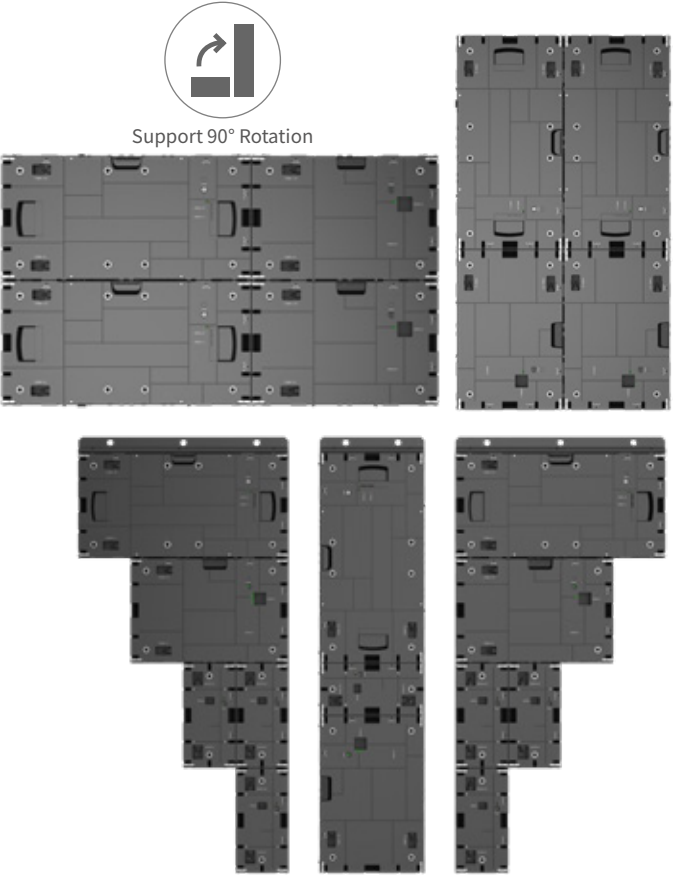
Direct Wall Mounting

Hanging

Stacking

## “X”tremely Flexible -- 90° Rotation

With its center-symmetrical module design, VIM Plus-L enables 90° rotated assembly for more installation options without color cast.



Irregular Staggered Shape with Multiple Sized Panels