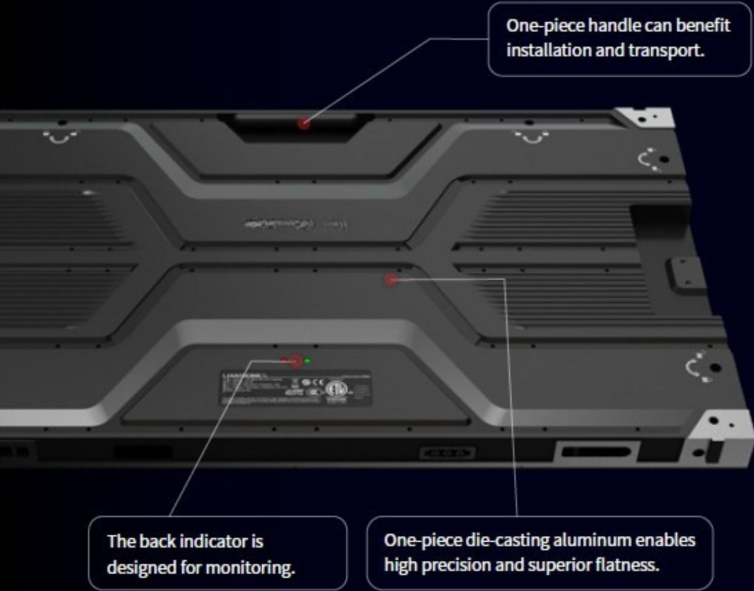


Considerate Details, Reliable Designs



16:9 Golden Ratio, Gorgeous Display

16:9 golden ratio brilliantly matches mainstream HD/4K/8K videos while maintaining pixel-to-pixel broadcasting; The 27-inch single cabinet can directly replace LCD display with distortion-free images.

*Take FHD(1920x1080 resolution) splicing as an example



Specifications

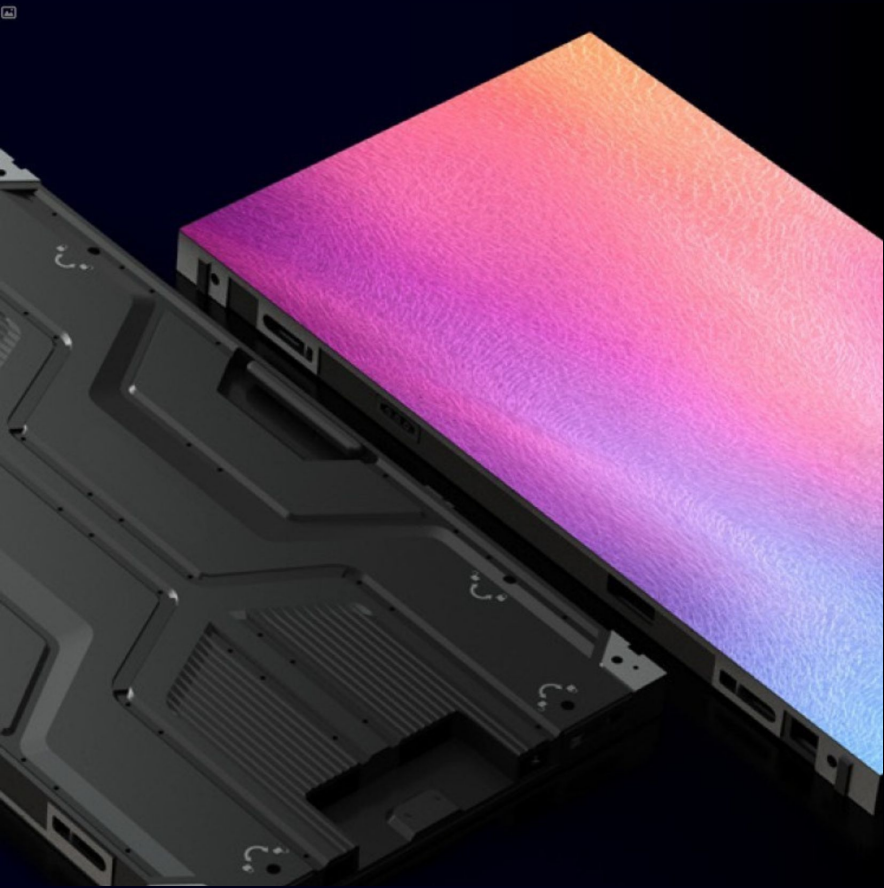
Model	BSL-BAIII0.9	BSL-BAIII1.2	BSL-BAIII1.5	BSL-BAIII1.8
Pixel Pitch (mm)	0.9	1.2	1.5	1.8
Pixel Density (dot/m²)	1137778	640000	409600	284444
LED Type	IMD	SMD	SMD	SMD
Module Size W×H (mm)	300*168.75			
Module Resolution W×H (pixel)	320*180	240*135	192*108	160*90
Panel Size W×H×D (mm)	600*337.5*33			
Panel Resolution W×H (pixel)	640*360	480*270	384*216	320*180
Panel Material	Die-casting Aluminum			
Weight (Kg/pc)	4.5			
Brightness (cd/m²)	600			
Brightness Adjustment	Programmable/Automatic/Manual			
Viewing Angle (H/V)	160°/160°			
Frame Rate (Hz)	50/60			
Refresh Rate (Hz)	3840			
Contrast Ratio	8000:1			
Color Temperature (K)	2000~10000 (Adjustable)			
Voltage (V)	AC 100-240			
Maximum Power Consumption (W/m²)	600	500	420	380
Average Power Consumption (W/m²)	150	125	105	95
Serviceability	Front			
IP Rating	Front IP30/Rear IP60			
LED Lifetime (Hours)	100000			

*Above parameters are for reference only. For more details, please contact our sales team.

Email: USA info@bigshineled.com | DR informacion@bigshinelasamericas.com.do
Phone: USA (845) 219-5548 | DR (809) 373-6635
Websites: bigshineled.com | bigshinelasamericas.com.do



5G
BSL-BA-III SERIES
5G High-End Fine-Pitch LED Display



Extreme-Thin
& Light



5G
Transmission



Quadruple
Backup



Fast
Interlock



Flexible
Splicing

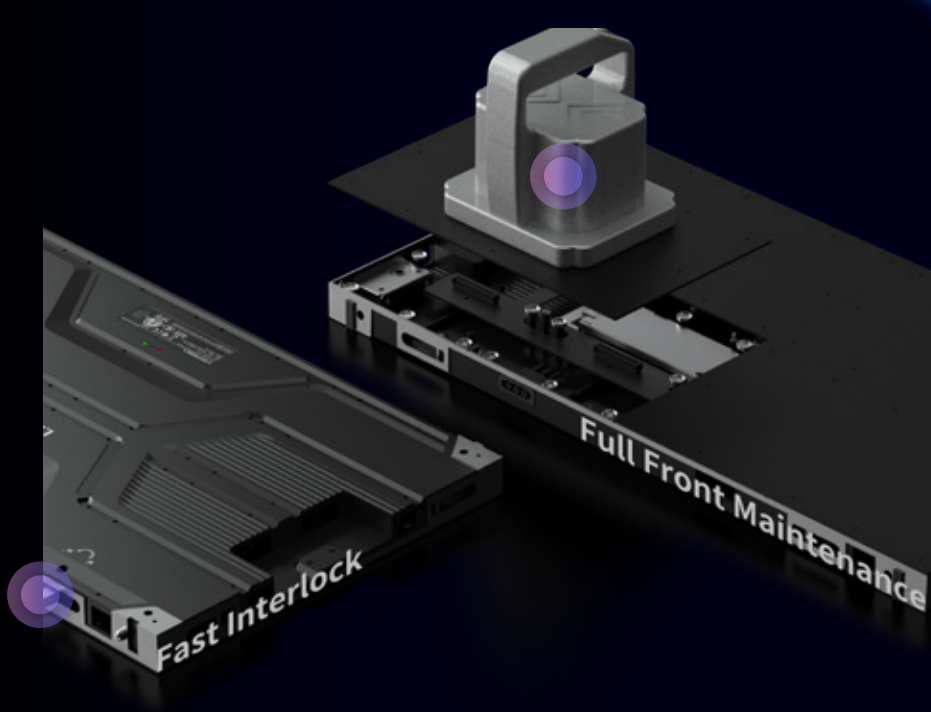


Considerate
Details

Your Trustworthy Display Solution Provider

Fast & Easy Installation & Maintenance

Fast interlock enables 1-second quick installation including wall-mounting, hanging, and stacking. Full front maintenance saves space & time.



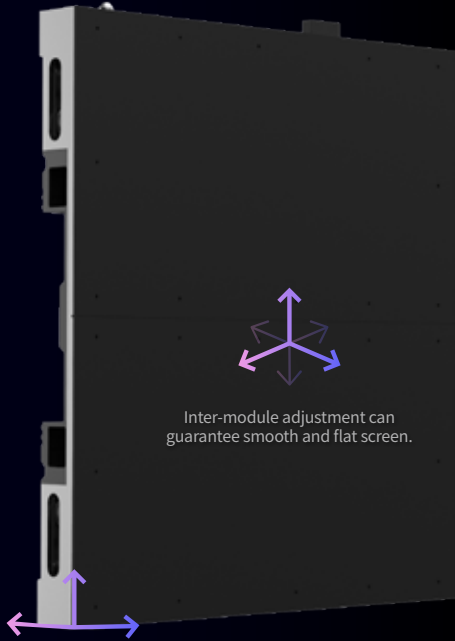
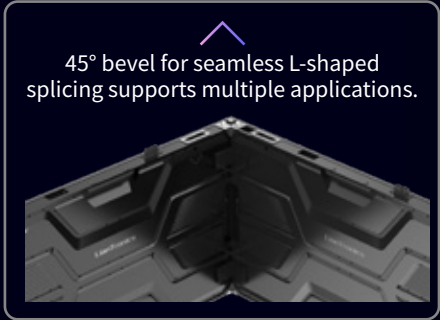
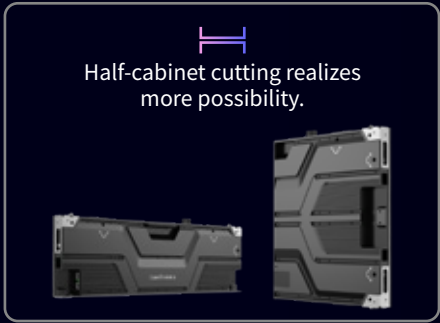
5G Transmission, Easier & More Stable

5G transmission enables 5G+8K display to enhance system efficiency, and meanwhile lower down the wiring difficulty by reducing the number of cables and devices to improve display stability.



Flexible Splicing with High Flatness

BSL-BA-III Series enables horizontal half-cabinet cutting, 45° bevel for seamless L-shaped splicing & curved splicing flexibly. Unique 6-Dimensional Minitrims Technology guarantees high flatness to achieve superior display.



Stacking



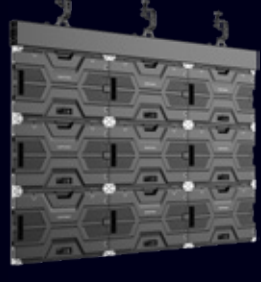
Wall Mounting



French Cleat

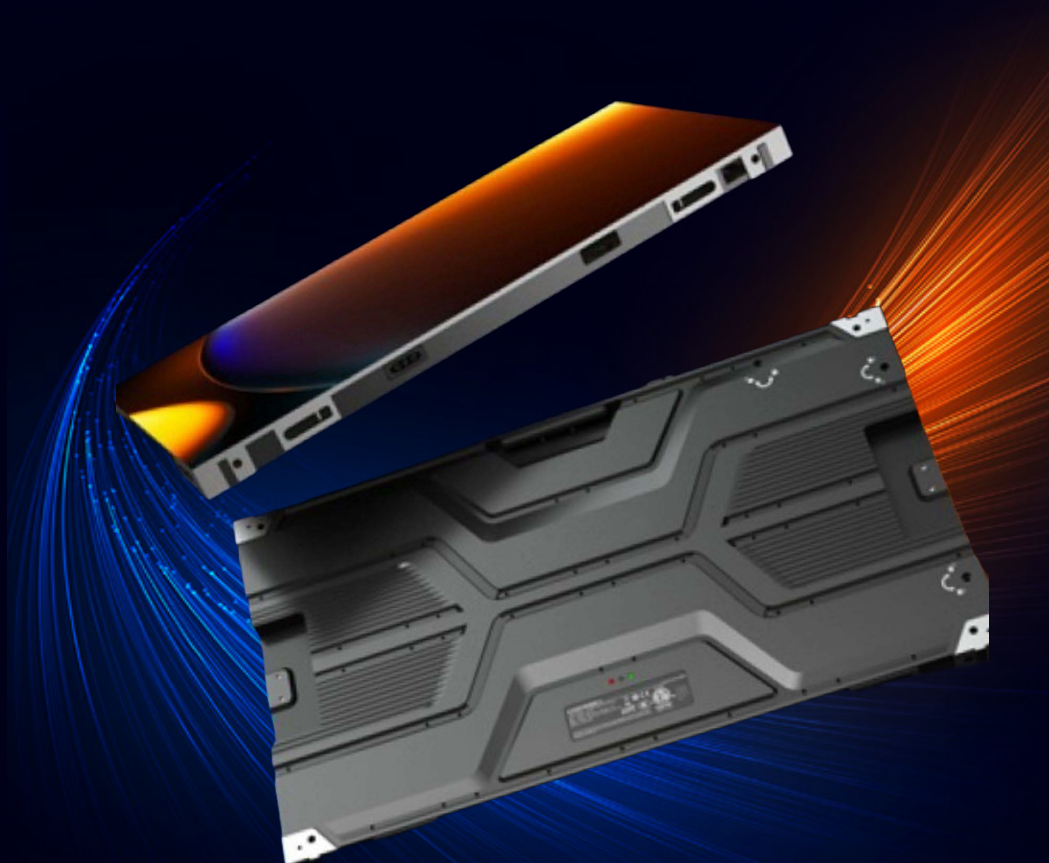


Hanging



Light & Slim Ever

33mm-extreme-thin cabinet with 4.5kg/pc lightweight only greatly saves steel structure, transport expenses, and installation costs.



Quadruple Backup, Never Blackout

BSL-BA-III Series allows multiple backup including power, receiving cards, power connectors, & signal connectors. The quadruple backup ensures never a blackout in the normal case.

